

Priemerné denné koncentrácie znečisťujúcich látok v júni 2024

Priemerné denné koncentrácie PM₁₀

| | Deň v mesiaci | | | | | | | | | | | | | | | | | | | | | | | | | | | | | | BA | BSK | TT | NR | TN | BB | ZA | KE | KSK | PO |
|---------------------------------|---------------|----|----|----|----|----|----|----|----|----|----|----|----|----|----|----|----|----|----|----|----|----|----|----|----|----|----|----|----|----|----|-----|----|----|----|----|----|----|-----|----|
| | 1 | 2 | 3 | 4 | 5 | 6 | 7 | 8 | 9 | 10 | 11 | 12 | 13 | 14 | 15 | 16 | 17 | 18 | 19 | 20 | 21 | 22 | 23 | 24 | 25 | 26 | 27 | 28 | 29 | 30 | | | | | | | | | | |
| Bratislava, Jeseniova | 6 | 6 | 15 | 14 | 16 | 14 | 11 | 15 | 12 | 15 | 11 | 7 | 8 | 13 | 13 | 6 | 12 | 15 | 22 | 11 | 29 | 11 | 10 | 12 | 18 | 17 | 25 | | | | | | | | | | | | | |
| Bratislava, Kamenné nám. | 6 | 8 | 11 | 17 | 18 | 19 | 15 | 20 | 14 | 20 | 11 | 7 | 9 | 17 | 16 | 8 | 17 | 20 | 28 | 15 | 32 | 15 | 11 | 12 | 23 | 18 | 28 | 20 | 23 | 25 | | | | | | | | | | |
| Bratislava, Mameťeyova | 32 | 50 | 40 | 17 | 22 | 31 | | 27 | | | | 7 | 10 | 13 | 14 | 7 | 14 | 18 | 24 | 14 | 31 | 12 | 11 | 13 | 19 | 19 | 28 | 20 | 21 | 25 | | | | | | | | | | |
| Bratislava, Púchovská | 9 | 8 | 15 | 17 | 22 | 21 | 15 | 21 | 13 | 18 | 12 | 9 | 12 | 16 | 17 | 8 | 17 | 22 | 26 | 16 | 31 | 16 | 14 | 16 | 24 | 23 | 30 | 22 | 23 | 24 | | | | | | | | | | |
| Bratislava, Trnavské Mýto | 8 | 8 | 17 | 17 | 23 | 25 | 17 | 22 | 13 | 23 | 14 | 12 | 14 | 20 | 16 | 10 | 20 | 23 | 31 | 19 | 35 | 15 | 13 | 16 | 25 | 22 | 34 | 25 | 34 | 27 | | | | | | | | | | |
| Pezinok, Obrancov mieru | 7 | 6 | 12 | 14 | 17 | 20 | 13 | 18 | 12 | 16 | 10 | 7 | 8 | 11 | 14 | 6 | 14 | 18 | 25 | 12 | 29 | 12 | 11 | 13 | 20 | 18 | 25 | 19 | 21 | 26 | | | | | | | | | | |
| Rohožník, Senická cesta | 6 | 7 | 15 | 19 | 17 | 21 | 17 | 19 | 15 | 21 | 15 | 12 | 12 | 16 | 16 | 9 | 18 | | | | 33 | 17 | 14 | 17 | 21 | 21 | 31 | 22 | 25 | 25 | | | | | | | | | | |
| Rovinka | 6 | 7 | 10 | 12 | 14 | 15 | 12 | 16 | 12 | 13 | 14 | 6 | 7 | 10 | 27 | 6 | 9 | 16 | 19 | 15 | 29 | 14 | 8 | 29 | 21 | 14 | 30 | 23 | 26 | 37 | | | | | | | | | | |
| Senec, Boldocká | 6 | 9 | 18 | 14 | 21 | 24 | 21 | 19 | 13 | 17 | 14 | 8 | 9 | 12 | 18 | 9 | 18 | 25 | 30 | 15 | 31 | 15 | 11 | 15 | 23 | 21 | 36 | 25 | 28 | 28 | | | | | | | | | | |
| Senica, Hviezdoslavova | 7 | 9 | 14 | | 16 | 19 | 15 | 16 | 13 | 18 | 14 | 6 | 10 | 14 | 15 | 7 | 14 | 19 | 25 | 11 | 27 | 12 | 10 | 12 | 20 | 19 | 29 | 25 | | | | | | | | | | | | |
| Sereď, Vinárska | 4 | 8 | 13 | 8 | 19 | 18 | 15 | 17 | 14 | 17 | 14 | 7 | 9 | 12 | 14 | 8 | 14 | 19 | 26 | 12 | 24 | 11 | 11 | 14 | 18 | 16 | 26 | 28 | 27 | 26 | | | | | | | | | | |
| Topoľníky, Aszód, EMEP | 6 | 8 | 12 | 10 | 18 | 13 | 13 | 15 | 12 | 16 | 12 | 8 | 9 | 9 | 11 | 7 | 12 | | | | | | 13 | 16 | 19 | 19 | 30 | 27 | 23 | 25 | | | | | | | | | | |
| Trnava, Kollárova | 7 | 11 | 16 | 13 | 23 | 23 | 19 | 19 | 15 | 22 | 16 | 8 | 11 | 13 | 18 | 8 | 17 | 25 | 29 | 16 | 31 | 15 | 12 | 16 | 22 | 22 | 30 | 28 | 29 | 28 | | | | | | | | | | |
| Komárno, Vnútorná Okružná | 6 | 10 | 14 | 10 | 20 | 19 | 18 | 19 | 14 | 16 | 16 | 9 | 12 | 13 | 14 | 10 | 16 | 24 | 29 | 18 | 31 | 16 | 14 | 17 | 17 | 19 | 28 | 30 | 26 | 28 | | | | | | | | | | |
| Nitra, Janíkovec | 6 | 11 | 15 | 11 | | | | 16 | 13 | 19 | 16 | 9 | 9 | 12 | 13 | 10 | 15 | 18 | 22 | 12 | 23 | 16 | 11 | 14 | 15 | | | | 25 | 25 | | | | | | | | | | |
| Nitra, Štúrova | 8 | 12 | 21 | 12 | 23 | 25 | 19 | 19 | 17 | 22 | 19 | 10 | 13 | 15 | 17 | 13 | 24 | 28 | 34 | 18 | 31 | 20 | 17 | 22 | 25 | 24 | 40 | 37 | 34 | 33 | | | | | | | | | | |
| Plášťovce | 7 | 11 | 15 | 9 | 14 | 16 | 14 | 17 | 13 | 17 | 20 | 13 | 12 | 11 | 16 | 13 | 11 | 20 | 26 | 18 | 24 | 22 | 16 | 15 | 14 | 23 | 24 | 21 | 21 | 28 | | | | | | | | | | |
| Bystričany, Rozvodňa SSE | 6 | 11 | 14 | 9 | 15 | 17 | 14 | 17 | 12 | 17 | 13 | 9 | 9 | 14 | 13 | 10 | 11 | 20 | 23 | 10 | 26 | 20 | 16 | 18 | 20 | 21 | 24 | 25 | 24 | 26 | | | | | | | | | | |
| Handlová, Morovianska cesta | 7 | 10 | 12 | 8 | 14 | 15 | 13 | 14 | 12 | 14 | 13 | 7 | 8 | 10 | 14 | 10 | 10 | 17 | 22 | 10 | 22 | 18 | 13 | 15 | 15 | 17 | 20 | 21 | 20 | 24 | | | | | | | | | | |
| Prievidza, Malonecpalská | 6 | 10 | 11 | 7 | 13 | 14 | 11 | 14 | 12 | 14 | 12 | 7 | 8 | 10 | 9 | 8 | 10 | 18 | 20 | 10 | 22 | 18 | 11 | 14 | 15 | 16 | 20 | 22 | 23 | 27 | | | | | | | | | | |
| Púchov, 1.mája | 8 | 11 | 14 | 11 | 18 | 17 | 17 | 16 | 17 | 18 | 13 | 8 | 9 | 11 | 15 | 13 | 13 | 22 | 25 | 13 | 31 | 19 | 15 | 16 | 22 | 21 | 22 | 26 | 28 | 29 | | | | | | | | | | |
| Trenčín, Hasičská | 7 | 11 | 14 | 9 | 18 | 20 | 15 | 19 | 15 | 16 | 14 | 9 | 9 | 13 | 16 | 11 | 15 | 23 | 28 | 11 | 28 | 16 | 14 | 17 | 21 | 21 | 24 | 24 | 27 | 29 | | | | | | | | | | |
| Banská Bystrica, Zelená | 5 | | 11 | 5 | 10 | 12 | 13 | 23 | 14 | 17 | 22 | 12 | 6 | 9 | 12 | 9 | 10 | 15 | 21 | 10 | 24 | 18 | 12 | 14 | 14 | 19 | 13 | 16 | 18 | 17 | | | | | | | | | | |
| Banská Bystrica, Štefánik. nám. | 7 | 11 | 16 | 11 | 16 | 21 | 17 | 12 | 14 | 18 | 15 | 10 | 9 | 16 | | 12 | 14 | 23 | 30 | 15 | 32 | 25 | 17 | 18 | 23 | 25 | 27 | 23 | 20 | 25 | | | | | | | | | | |
| Hnúšťa, Hlavná | 8 | 8 | 10 | 7 | 10 | 14 | 10 | 12 | 12 | 14 | | 14 | 17 | 12 | | 16 | 9 | 17 | 28 | 16 | 23 | 29 | 18 | 13 | 11 | 17 | 21 | 19 | 19 | 23 | | | | | | | | | | |
| Jelšava, Jesenského | 9 | 9 | 15 | 7 | 12 | 18 | 12 | 15 | 13 | 11 | 15 | 13 | 12 | 10 | 17 | 19 | 14 | 16 | 30 | 15 | 23 | 28 | 13 | 15 | 12 | 21 | 22 | 25 | 23 | 24 | | | | | | | | | | |
| Lučenec, Gemerská cesta | 9 | 10 | 14 | 8 | 13 | 19 | | 15 | 15 | 14 | 15 | 16 | 16 | 11 | 15 | 14 | 13 | 21 | 30 | 23 | 26 | 34 | 19 | 17 | 15 | 22 | 27 | 23 | 21 | 28 | | | | | | | | | | |
| Zvolen, J. Alexyho | 6 | 9 | 16 | 6 | 16 | 15 | 14 | 19 | 14 | 16 | 13 | 9 | 10 | 12 | 15 | 12 | 11 | 17 | 23 | 13 | 23 | 23 | 16 | 16 | 17 | 18 | 21 | 21 | 22 | 25 | | | | | | | | | | |
| Žarnovica | 7 | 11 | 12 | 9 | 14 | 17 | 15 | 17 | 13 | 15 | 14 | 8 | 11 | 11 | 13 | 12 | 13 | 22 | 25 | 15 | 25 | 19 | 16 | 17 | 18 | 21 | 23 | 22 | 24 | 27 | | | | | | | | | | |
| Žiar nad Hronom, Jilemnického | 7 | 10 | 10 | 9 | 12 | 16 | 13 | 15 | 13 | 14 | 11 | 8 | 7 | 10 | 12 | 11 | 9 | 17 | 23 | | 25 | 17 | 13 | 16 | 18 | 18 | 18 | 19 | 21 | 25 | | | | | | | | | | |
| Liptovský Mikuláš, Školská | 8 | 8 | 13 | 7 | 14 | 15 | 13 | 15 | 11 | 15 | 14 | 11 | 9 | 12 | 14 | 13 | 11 | 18 | 26 | 9 | 32 | 28 | 13 | 16 | 13 | 22 | 25 | 23 | 24 | 25 | | | | | | | | | | |
| Martin, Jesenského | 8 | 11 | 15 | 12 | 19 | 18 | 15 | 18 | 15 | 17 | 17 | 15 | 14 | 16 | 17 | 15 | 15 | 21 | 26 | 16 | 30 | 24 | 18 | 22 | 20 | 25 | 26 | 27 | 27 | 30 | | | | | | | | | | |
| Ošadnica | 4 | 7 | 14 | 7 | 16 | 12 | 10 | 14 | 12 | 14 | 16 | 11 | 10 | 12 | 13 | 9 | 10 | 15 | 20 | 9 | 27 | 18 | 14 | 15 | 13 | 16 | 17 | 18 | 19 | 18 | | | | | | | | | | |
| Ružomberok, Riadok | 5 | 5 | 14 | 5 | 11 | 13 | 12 | 13 | 8 | 12 | 11 | 8 | 6 | 11 | 11 | 7 | 11 | 16 | 21 | 6 | 27 | 19 | 9 | 12 | 12 | 18 | 17 | 19 | 18 | 21 | | | | | | | | | | |
| Žilina, Obežná | 6 | 8 | 13 | 9 | 17 | 14 | 13 | 16 | 11 | 14 | 13 | 8 | 8 | 11 | 12 | 9 | 11 | 18 | 21 | 9 | 29 | 20 | 12 | 14 | 15 | 21 | 17 | 22 | 25 | 24 | | | | | | | | | | |
| Košice, Amurská | 11 | 11 | 14 | 9 | 16 | 20 | 16 | 16 | 13 | 20 | 16 | 15 | 11 | 11 | 18 | 17 | 15 | 23 | 37 | 14 | 36 | 30 | 15 | 17 | 13 | 24 | 22 | 22 | 31 | 29 | | | | | | | | | | |
| Košice, Štefánikova | 11 | 10 | 17 | 11 | 15 | 22 | 19 | 19 | 14 | 20 | 18 | 13 | 11 | 14 | 17 | 17 | 23 | 39 | 17 | 36 | 33 | 17 | 17 | 15 | 34 | 31 | 26 | 28 | 33 | | | | | | | | | | | |
| Veľká Ida, Letná | 12 | 7 | 17 | 11 | 14 | 29 | 18 | 21 | 19 | 18 | 20 | 38 | 25 | 23 | 21 | 18 | 17 | 27 | 34 | 43 | 35 | 43 | 35 | 49 | 43 | 26 | 39 | 26 | 32 | 28 | | | | | | | | | | |
| Krompachy, SNP | 8 | 9 | 13 | 8 | 13 | 14 | 14 | 15 | 10 | 15 | 15 | 14 | 10 | 12 | 15 | 17 | 13 | 21 | 34 | 11 | 26 | 30 | 15 | 15 | 11 | 21 | 18 | 19 | 24 | 24 | | | | | | | | | | |
| Strážske, Mierová | 11 | 9 | 13 | 10 | 17 | 19 | 13 | 18 | 16 | 18 | 17 | 15 | 12 | 12 | 14 | 14 | 16 | 19 | 28 | 14 | 20 | 26 | 14 | 14 | 12 | 23 | 22 | 20 | 24 | | | | | | | | | | | |
| Trebišov, T. G. Masaryka | 9 | 9 | 13 | 11 | 16 | 19 | 14 | 17 | 17 | 20 | 17 | 12 | 9 | 11 | 17 | 15 | 16 | 23 | 34 | 13 | 21 | 26 | 15 | 15 | 12 | 24 | 23 | 24 | 23 | 29 | | | | | | | | | | |
| Bardejov, Pod Vinbargom | 6 | 6 | 8 | 5 | 10 | 12 | 8 | 11 | 8 | 10 | 11 | 8 | 7 | 9 | 10 | 10 | 12 | 19 | 9 | 14 | 15 | 11 | 10 | 9 | 18 | 16 | 15 | 19 | 18 | | | | | | | | | | | |
| Humenné, Nám. slobody | 10 | 9 | 14 | 10 | 16 | 19 | 13 | 15 | 15 | 18 | 17 | 16 | 12 | 10 | 13 | 13 | 15 | 20 | 31 | 14 | 23 | 27 | 15 | 14 | 11 | 27 | 25 | 23 | 24 | 25 | | | | | | | | | | |
| Kolonické sedlo | 9 | 7 | 9 | 7 | 9 | 18 | 10 | 12 | 11 | 12 | 14 | 12 | 10 | 7 | 8 | 11 | 12 | 14 | 22 | 10 | 18 | 25 | 14 | 12 | 23 | 26 | 54 | 16 | 21 | 19 | | | | | | | | | | |
| Poprad, Železničná | 7 | 6 | 10 | 6 | 11 | 14 | 10 | 20 | 9 | 11 | 13 | 12 | 9 | 11 | 15 | 13 | 11 | 18 | 30 | 10 | 30 | 27 | 12 | 14 | 11 | 19 | 20 | 21 | 21 | 25 | | | | | | | | | | |
| Prešov, arm. gen. L. Svobodu | 12 | 9 | 16 | 12 | 18 | 21 | 17 | 18 | 13 | 21 | 22 | 13 | 13 | 14 | 15 | 17 | 21 | 21 | 37 | 13 | 29 | 26 | 16 | 17 | 13 | 24 | 26 | 30 | 31 | 31 | | | | | | | | | | |
| Stará Lesná, AÚ SAV, EMEP | 6 | 5 | 9 | 5 | 9 | 9 | 9 | 12 | 8 | 11 | 12 | 9 | 6 | 8 | 12 | 11 | 10 | 13 | 22 | 7 | 25 | 23 | 14 | 12 | 9 | 15 | 18 | 19 | 19 | 23 | | | | | | | | | | |
| Vranov nad Top., M.R.Štefánika | 9 | 7 | 11 | 7 | 12 | 15 | 11 | 13 | 13 | 17 | 15 | 11 | 9 | 10 | 11 | 12 | 14 | 17 | 26 | 10 | 17 | 22 | 12 | 12 | 9 | 21 | 20 | 16 | 20 | 23 | | | | | | | | | | |

Hodnoty sú uvedené v $\mu\text{g}/\text{m}^3$. Prázdny štvorec znamená menej ako 75 % platných meraní za daný deň.

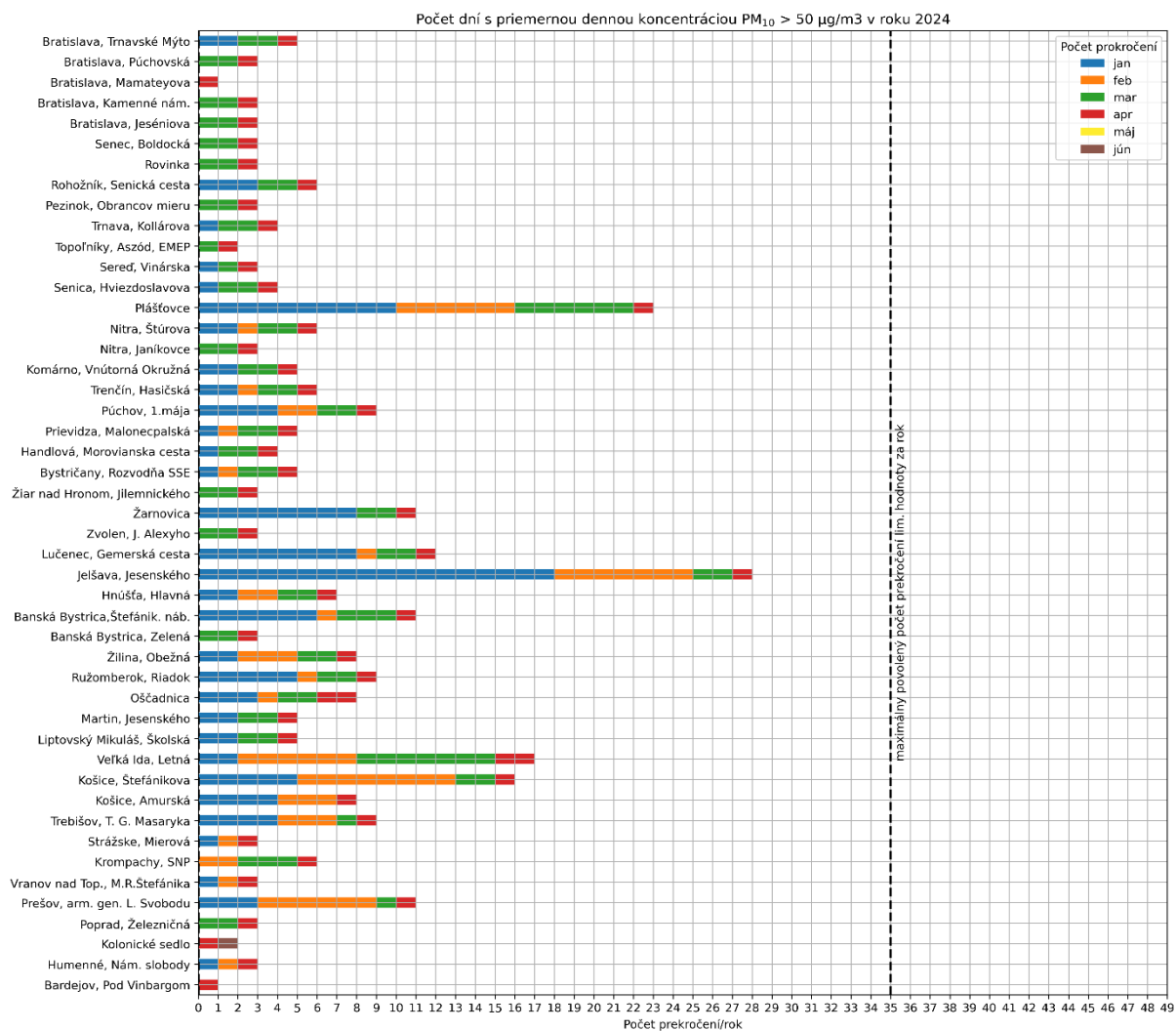
Poznámka

Limitná hodnota pre priemernú ročnú koncentráciu PM₁₀ je 40 $\mu\text{g}/\text{m}^3$.

Priemerná denná koncentrácia PM₁₀ nesmie prekročiť hodnotu 50 $\mu\text{g}/\text{m}^3$ viac ako 35 krát za kalendárny rok.

Vysoké hodnoty PM na Kolonickom sedle 27.6.2024 boli zapríčinené stavebnými prácami v blízkosti stanice.

Počet prekročení limitnej hodnoty pre priemernú dennú koncentráciu PM₁₀



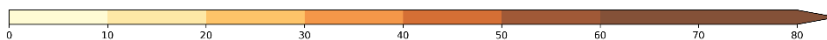
Poznámka

Limitná hodnota pre priemernú ročnú koncentráciu PM₁₀ je 40 µg/m³.

Priemerná denná koncentrácia PM₁₀ nesmie prekročiť hodnotu 50 µg/m³ viac ako 35 krát za kalendárny rok.

Priemerné denné koncentrácie NO₂

| | Deň v mesiaci | | | | | | | | | | | | | | | | | | | | | | | | | | | | | | |
|---------------------------------|---------------|----|----|----|----|----|----|----|----|----|----|----|----|----|----|----|----|----|----|----|----|----|----|----|----|----|----|----|----|----|---|
| | 1 | 2 | 3 | 4 | 5 | 6 | 7 | 8 | 9 | 10 | 11 | 12 | 13 | 14 | 15 | 16 | 17 | 18 | 19 | 20 | 21 | 22 | 23 | 24 | 25 | 26 | 27 | 28 | 29 | 30 | |
| Bratislava, Jeséniova | 1 | | 3 | 4 | 4 | 1 | 3 | | 2 | | | | 5 | 1 | | 2 | 2 | 3 | 1 | 3 | | | | 2 | 1 | 2 | | | | | |
| Bratislava, Mamatayova | 6 | 7 | 14 | 13 | 16 | 14 | 13 | 12 | 5 | 15 | 8 | 8 | 10 | 11 | 8 | 12 | 13 | 10 | 14 | 9 | 8 | 6 | 6 | 11 | 13 | 8 | 22 | 17 | 10 | 4 | |
| Bratislava, Púchovská | 8 | 3 | 9 | 5 | 11 | 15 | 7 | 8 | 5 | 10 | 4 | 4 | 5 | 13 | 8 | 2 | 11 | 11 | 9 | 7 | 9 | 3 | 4 | 6 | 10 | 10 | 8 | 8 | 11 | 5 | |
| Bratislava, Trnavské Mýto | 17 | 17 | 31 | 25 | 40 | 36 | 35 | 20 | 12 | 35 | 16 | 22 | 26 | 34 | 15 | 17 | 31 | 29 | 30 | 26 | 24 | 13 | 14 | 26 | 29 | 26 | 38 | 35 | 22 | 18 | |
| Pezinok, Obrancov mieru | 3 | 2 | 6 | 13 | 9 | 12 | 5 | 5 | 3 | 6 | 3 | 5 | 5 | 8 | 4 | 1 | 4 | 4 | 5 | 3 | 4 | 2 | 1 | 2 | 4 | 5 | 4 | 3 | 4 | 2 | |
| Rovinka | 5 | 7 | 9 | 9 | 7 | 12 | 9 | 6 | 5 | 11 | 8 | 7 | 7 | 8 | 7 | 6 | 7 | 5 | 6 | 7 | 6 | 6 | 6 | 7 | 7 | 5 | 9 | 13 | 6 | 4 | |
| Senec, Boldocká | 10 | 13 | 15 | 16 | 17 | 18 | 24 | 10 | 9 | 17 | 13 | 14 | 14 | 17 | 9 | 15 | 15 | 12 | 16 | 13 | 9 | 13 | 8 | 11 | 14 | 10 | 15 | 25 | 11 | 5 | |
| Sereď, Vinárska | 4 | 6 | 7 | 7 | 9 | 9 | 10 | 6 | 4 | 7 | 7 | 7 | 8 | 9 | 4 | 7 | 7 | 5 | 8 | 7 | 4 | 6 | 5 | 8 | 6 | 6 | 6 | 9 | 6 | 3 | |
| Topoľníky, Aszód, EMEP | 2 | 2 | 3 | 3 | 3 | 4 | 3 | 2 | 2 | 2 | 2 | 3 | 3 | 3 | 3 | 2 | 2 | 3 | 3 | 3 | 6 | 3 | 2 | 2 | 3 | 2 | 2 | 6 | 4 | 2 | |
| Trnava, Kollárova | 11 | 15 | 22 | 22 | 22 | 25 | 22 | 18 | 12 | 27 | 22 | 23 | 26 | 23 | 18 | 16 | 19 | 23 | 21 | 23 | 21 | 20 | 14 | 23 | 25 | 22 | 22 | 25 | 18 | 11 | |
| Komárno, Vnútorná Okružná | 6 | 8 | 10 | 6 | 13 | 11 | 8 | 8 | 3 | 5 | 5 | 4 | 6 | 11 | 6 | 4 | 11 | 9 | 12 | 7 | 9 | 5 | 3 | 6 | 6 | 5 | 6 | 9 | 9 | 5 | |
| Nitra, Janíkovce | 3 | 4 | 5 | 5 | 6 | 8 | 5 | 4 | 3 | 4 | 5 | 4 | 5 | 6 | 3 | 3 | 5 | | | | | 3 | 2 | 4 | 3 | 3 | 5 | 4 | 2 | | |
| Nitra, Štúrova | 15 | 17 | 21 | 17 | 20 | 24 | 24 | 16 | 11 | 23 | 14 | 13 | 16 | 24 | 15 | 12 | 22 | 25 | 26 | 18 | 26 | 10 | 9 | 16 | 23 | 26 | 22 | 25 | 18 | 12 | |
| Plášťovce | 2 | 2 | 3 | 3 | 3 | 3 | 4 | 3 | 2 | 3 | 3 | 3 | 3 | 3 | 5 | 3 | 3 | 4 | 5 | 4 | 4 | 3 | 2 | 4 | 4 | 4 | 3 | 4 | 4 | 3 | |
| Prievidza, Malonecpalská | 8 | 9 | 7 | 9 | 8 | 11 | 10 | 6 | 5 | 11 | 9 | 4 | 8 | 11 | 5 | 7 | 7 | 8 | 7 | 7 | 7 | 8 | 7 | 10 | 7 | 6 | 6 | 10 | 7 | 3 | |
| Púchov, 1.mája | 2 | 3 | 3 | 4 | 3 | 4 | 3 | 2 | 2 | 5 | 2 | 5 | 3 | 4 | 3 | 3 | 3 | 3 | 4 | 4 | 6 | 4 | 5 | 6 | 6 | 4 | 3 | 3 | 2 | 1 | |
| Trenčín, Hasičská | 10 | 12 | 14 | 8 | 14 | 18 | 17 | 12 | 9 | 16 | 11 | 8 | 9 | 17 | 13 | 8 | 13 | 18 | 19 | 9 | 17 | 11 | 8 | 12 | 11 | 19 | 15 | 16 | 14 | 10 | |
| Banská Bystrica, Zelená | 3 | 2 | 4 | 4 | 3 | 5 | 4 | 2 | 2 | 4 | 3 | 4 | 4 | 3 | 2 | 2 | 4 | 3 | 3 | 2 | 5 | 2 | 2 | 3 | 5 | 5 | 5 | 3 | 2 | 2 | |
| Banská Bystrica, Štefánik. náb. | 14 | 8 | 19 | 20 | 15 | 21 | 19 | 8 | 8 | 21 | | 13 | 12 | 22 | | 13 | 17 | 19 | 22 | 16 | 21 | 14 | 10 | 17 | 19 | 21 | 19 | 15 | 11 | 11 | |
| Jelšava, Jesenského | 2 | 2 | 3 | 4 | 3 | 3 | 3 | 2 | 2 | 3 | 4 | 2 | 4 | 2 | 2 | 3 | 3 | 2 | 3 | 2 | 3 | 3 | 2 | 3 | 4 | 3 | 4 | 3 | 2 | 2 | 3 |
| Lučenec, Gemerská cesta | 6 | 4 | 8 | 7 | 7 | 8 | | 6 | 4 | 12 | 7 | 8 | 11 | 7 | 6 | 4 | 10 | 10 | 10 | 9 | 10 | 5 | 5 | 8 | 8 | 9 | 8 | 5 | 5 | | |
| Žarnovica | 5 | 4 | 7 | 6 | 5 | 9 | 8 | 6 | 4 | 8 | 6 | 8 | 6 | 7 | 6 | 5 | 7 | 7 | 7 | 6 | 8 | 5 | 5 | 6 | 6 | 9 | 7 | 5 | 4 | 5 | |
| Chopok, EMEP | 1 | 1 | 1 | 2 | 2 | 2 | 1 | 1 | 1 | 1 | 1 | 1 | 1 | 2 | 1 | 1 | 1 | 1 | 2 | 1 | 2 | 1 | 1 | 2 | 1 | 1 | 1 | 1 | 2 | 1 | |
| Liptovský Mikuláš, Školská | 3 | 3 | 6 | 5 | 5 | 6 | 7 | 4 | 3 | 10 | 6 | 8 | 8 | 7 | 3 | 5 | 6 | 6 | 6 | 3 | 5 | 4 | 2 | 4 | 3 | 7 | 8 | 6 | 4 | 3 | |
| Martin, Jesenského | 6 | 7 | 9 | 12 | 13 | 12 | 13 | 9 | 6 | 13 | 13 | 14 | 14 | 14 | 10 | 10 | 12 | 12 | 12 | 12 | 9 | 8 | 7 | 12 | 10 | 11 | 11 | 8 | 9 | 6 | |
| Oščadnica | 2 | 2 | 3 | 5 | 2 | 2 | 3 | 2 | 2 | 3 | 3 | 4 | 3 | 3 | 2 | 3 | 1 | 2 | 3 | 2 | 2 | 2 | 2 | 3 | 2 | 2 | 2 | 2 | 2 | 1 | |
| Ružomberok, Riadok | 8 | 5 | 16 | 11 | 9 | 11 | 14 | 8 | 5 | 15 | 9 | 13 | 12 | 15 | 7 | 8 | 11 | 11 | 12 | 7 | 11 | 7 | 4 | 7 | 14 | 12 | 13 | 10 | 8 | 5 | |
| Žilina, Obežná | 8 | 10 | 14 | 16 | 14 | 13 | 17 | 14 | 9 | 17 | 12 | 14 | 14 | 13 | 10 | 11 | 12 | 12 | 13 | 12 | 13 | 12 | 8 | 10 | 12 | 14 | 16 | 17 | 11 | 7 | |
| Kojšovská hoľa | 2 | 1 | 1 | 2 | 1 | 1 | 1 | 1 | 1 | 1 | 1 | 2 | 2 | 2 | 2 | 2 | 1 | 2 | 2 | 1 | 2 | 1 | 1 | 2 | 1 | 1 | 1 | 1 | 1 | 2 | |
| Košice, Štefánikova | 14 | 8 | 14 | 21 | 13 | 15 | 25 | 12 | 13 | 28 | 17 | 11 | 10 | 12 | 13 | 13 | 15 | 16 | 19 | 13 | 20 | 11 | 7 | 9 | 10 | 13 | 14 | 13 | 9 | 12 | |
| Krompachy, SNP | 4 | 4 | 7 | 9 | 7 | 6 | 10 | 4 | 5 | 11 | 9 | 9 | 9 | 8 | 6 | 7 | 7 | 6 | 8 | 8 | 8 | 7 | 6 | 9 | 6 | 9 | 9 | 8 | 6 | 5 | |
| Trebišov, T. G. Masaryka | 5 | 4 | 7 | 5 | 5 | 9 | 9 | 5 | 5 | 7 | 5 | 3 | 4 | 4 | 5 | 6 | 5 | 8 | 8 | 4 | 7 | 4 | 3 | 4 | 3 | 5 | 4 | 5 | 5 | 5 | |
| Bardejov, Pod Vinbargom | 3 | 5 | 5 | 7 | 5 | 6 | 5 | 6 | 4 | 6 | 6 | 7 | 6 | 5 | 5 | 4 | 4 | 5 | 5 | 8 | 6 | 5 | 7 | 9 | 6 | 7 | 5 | 6 | 4 | 3 | |
| Gánovce, Meteo. st. | 1 | 1 | 5 | 4 | 3 | 3 | 3 | 4 | 1 | 2 | 4 | 3 | 4 | 4 | 4 | 3 | 3 | 3 | 2 | 3 | 3 | 2 | 3 | 4 | 3 | 4 | 3 | 3 | 4 | 1 | |
| Humenné, Nám. slobody | 3 | 3 | 4 | 5 | 4 | 5 | 5 | 4 | 3 | 9 | 7 | 5 | 6 | 4 | 3 | 3 | 4 | 4 | 5 | 4 | 4 | 3 | 3 | 3 | 3 | 4 | 4 | 4 | 3 | 3 | |
| Poprad, Železničná | | 1 | 4 | 5 | 3 | 6 | 5 | 1 | | 7 | 5 | | 3 | 4 | 2 | 2 | 2 | 5 | 6 | 0 | 3 | 1 | | 1 | | 5 | 5 | 4 | 1 | 1 | |
| Prešov, arm. gen. L. Svobodu | 22 | 15 | 32 | 40 | 33 | 36 | 40 | 25 | 20 | 33 | 39 | 31 | 36 | 33 | 25 | 25 | 35 | 28 | 36 | 30 | 35 | 26 | 20 | 33 | 31 | 33 | 38 | 37 | 24 | 18 | |
| Starina, Vodná nádrž, EMEP | 1 | 1 | 1 | 1 | 1 | 2 | 2 | 1 | 1 | 1 | 1 | 1 | 2 | 1 | 1 | 1 | 1 | 1 | 1 | 1 | 1 | 1 | 1 | 1 | 1 | 1 | 1 | 1 | 1 | 1 | |
| Stará Lesná, AÚ SAV, EMEP | 2 | 2 | 2 | 3 | 3 | 2 | 3 | 2 | 2 | 3 | 3 | 2 | 3 | 3 | 2 | 3 | 2 | 2 | 2 | 2 | 3 | 2 | 2 | 2 | 2 | 2 | 2 | 2 | 2 | 2 | |



Hodnoty sú uvedené v µg/m³. Prázdny štvorec znamená menej ako 75 % platných meraní za daný deň.

Poznámka

Limitná hodnota pre NO₂ :

Priemerná hodinová koncentrácia nesmie prekročiť hodnotu 200 µg/m³ viac ako 18 krát za kalendárny rok.

Limitná hodnota pre priemernú ročnú koncentráciu NO₂ je 40 µg/m³.

Maximálne denné 8-hodinové koncentrácie O₃

| | Deň v mesiaci | | | | | | | | | | | | | | | | | | | | | | | | | | | | | | |
|----------------------------|---------------|----|-----|-----|-----|-----|-----|-----|-----|-----|-----|-----|-----|-----|-----|-----|-----|----|-----|----|----|-----|-----|-----|-----|-----|-----|-----|-----|-----|----|
| | 1 | 2 | 3 | 4 | 5 | 6 | 7 | 8 | 9 | 10 | 11 | 12 | 13 | 14 | 15 | 16 | 17 | 18 | 19 | 20 | 21 | 22 | 23 | 24 | 25 | 26 | 27 | 28 | 29 | 30 | |
| Bratislava, Jeséniova | 87 | 85 | 91 | 80 | 87 | 109 | 101 | 97 | 96 | 77 | 94 | 110 | 116 | 105 | 91 | 80 | 85 | 89 | 86 | 67 | 82 | 89 | 81 | 79 | 98 | 96 | 106 | 109 | 116 | 118 | |
| Bratislava, Mamateyova | 80 | 83 | 88 | 78 | 82 | 101 | 97 | 95 | 95 | 70 | 86 | 99 | 112 | 101 | 65 | 76 | 79 | 83 | 81 | 67 | 60 | 79 | 73 | 70 | 95 | 93 | 103 | 106 | 116 | 119 | |
| Pezinok, Obrancov mieru | 82 | 83 | 90 | 77 | 84 | 99 | 96 | 91 | 91 | 72 | 84 | 99 | 105 | 94 | 66 | 83 | 78 | 80 | 85 | 67 | 79 | 81 | 72 | 73 | 92 | 92 | 106 | 107 | 109 | 114 | |
| Senec, Boldocká | 81 | 79 | 87 | 68 | 80 | 91 | 100 | 96 | 95 | 72 | 80 | 94 | 101 | 87 | 64 | | 79 | 81 | 75 | 64 | 78 | 79 | 64 | 63 | 88 | 95 | 107 | 104 | 115 | 118 | |
| Topoľníky, Aszód, EMEP | 75 | 80 | 83 | 77 | 83 | 93 | 92 | 92 | 88 | 67 | 85 | 102 | 107 | 101 | 74 | 80 | 77 | 77 | | 70 | 72 | 68 | 65 | 68 | 93 | 93 | 102 | 96 | 110 | 114 | |
| Komárno, Vnútorná Okružná | 87 | 88 | 97 | 85 | 93 | 98 | 100 | 106 | 102 | 76 | 87 | 105 | 118 | 114 | 85 | 84 | 81 | 91 | 91 | 79 | 78 | 63 | 71 | 72 | 98 | | 115 | 113 | 118 | 120 | |
| Nitra, Janíkovce | 59 | 57 | 76 | 53 | 63 | 59 | 65 | 72 | 71 | 46 | 49 | 66 | 57 | 54 | 45 | 62 | 49 | 60 | 65 | 47 | 49 | 40 | 46 | 35 | 72 | 66 | 86 | 89 | 71 | | |
| Plášťovce | 77 | 74 | 89 | 72 | 82 | 79 | 83 | 91 | 94 | 63 | 77 | 87 | 105 | 99 | 81 | 79 | 73 | 85 | 84 | 73 | 69 | 69 | 73 | 46 | 87 | 89 | 98 | 96 | 100 | 102 | |
| Prievidza, Malonecpalská | 83 | 75 | 84 | 67 | 75 | 70 | 86 | 98 | 103 | 73 | 72 | 99 | 96 | 88 | 57 | 75 | 68 | 76 | 74 | 64 | 61 | 69 | 70 | 60 | 82 | 93 | 110 | 108 | 108 | 110 | |
| Banská Bystrica, Zelená | 69 | 68 | 87 | 71 | 75 | 76 | 77 | 87 | 87 | 67 | 71 | 86 | 88 | 84 | 68 | 80 | 76 | 79 | 81 | 67 | 61 | 62 | 76 | 56 | 88 | 85 | 89 | 88 | 92 | 95 | |
| Jeľšava, Jesenského | 83 | 79 | 98 | 84 | 85 | 60 | 91 | 101 | 101 | 88 | 90 | 100 | 99 | 93 | 84 | 83 | 75 | 86 | 90 | 69 | 75 | 73 | 89 | 67 | 80 | 97 | 101 | 108 | 109 | | |
| Lučenec, Gemerská cesta | 75 | 78 | 93 | 76 | 80 | 78 | 87 | 90 | 89 | 66 | 77 | 82 | 99 | 104 | 73 | 79 | 81 | 81 | 86 | 74 | 74 | 68 | 77 | 47 | 86 | 90 | 97 | 98 | 100 | 105 | |
| Chopok, EMEP | 94 | 90 | 108 | 112 | 104 | 107 | 106 | 116 | 116 | 118 | 128 | 144 | 113 | 130 | 101 | 119 | 105 | 94 | 99 | 98 | 95 | 106 | 103 | 109 | 111 | 115 | 110 | 114 | 122 | 122 | |
| Ošadnica | 84 | 78 | 90 | 74 | 84 | 74 | 89 | 95 | 102 | 61 | 70 | 94 | 95 | 88 | 51 | 87 | 71 | 76 | 82 | 78 | 64 | 82 | 79 | 66 | 87 | 97 | 110 | 108 | 114 | 111 | |
| Ružomberok, Riadok | 74 | 65 | 84 | 67 | 73 | 76 | 69 | 84 | 86 | 50 | 57 | 80 | 97 | 90 | 64 | 84 | 74 | 81 | 80 | 79 | 62 | 72 | 70 | 53 | 79 | 82 | 100 | 95 | 98 | 94 | |
| Žilina, Obežná | 74 | 70 | 80 | 66 | 67 | 62 | 69 | 72 | 78 | 58 | 63 | 75 | 79 | 74 | 32 | | | | | | | | | 67 | 63 | 72 | 85 | 85 | 84 | 86 | 89 |
| Kojšovská hoľa | 78 | 82 | 98 | 98 | 85 | 89 | 87 | 91 | 98 | 108 | 77 | 97 | 97 | 98 | 91 | 106 | 94 | 86 | 89 | 90 | 85 | 76 | 82 | | | | | 105 | 104 | 110 | |
| Košice, Dumbierska | 81 | 67 | 98 | 84 | 70 | 60 | 93 | 97 | | 77 | 76 | 96 | 94 | 100 | 75 | 69 | 83 | 88 | 90 | 92 | 69 | 68 | 78 | 61 | 76 | 97 | 110 | 115 | 107 | 110 | |
| Trebíšov, T. G. Masaryka | 81 | 73 | 94 | 90 | 74 | 56 | 93 | 91 | 97 | 79 | 76 | 97 | 100 | 95 | 76 | 79 | 86 | | 86 | 93 | 63 | 60 | 73 | 53 | 64 | 92 | 106 | 111 | 101 | 110 | |
| Bardejov, Pod Vlnbargom | 86 | 71 | 91 | 87 | 76 | 78 | 94 | 96 | 109 | 63 | 72 | 95 | 96 | 75 | 57 | 90 | 76 | 86 | 90 | 92 | 61 | 71 | 72 | 54 | 79 | 89 | 116 | 118 | 104 | 110 | |
| Gánovce, Meteo. st. | 89 | 82 | 94 | 92 | 87 | 86 | 88 | 102 | 102 | 95 | 69 | 101 | 97 | 89 | 83 | 93 | 75 | 70 | 90 | 84 | 57 | 71 | 87 | 54 | 94 | 97 | 110 | 108 | 110 | 114 | |
| Humenné, Nám. slobody | 86 | 83 | 93 | 88 | 83 | 76 | 93 | 98 | 102 | 78 | 74 | 96 | 96 | 94 | 73 | 76 | 76 | 85 | 89 | 94 | 60 | 65 | 71 | 47 | 57 | 96 | 108 | 109 | 102 | 108 | |
| Starina, Vodná nádrž, EMEP | 80 | 79 | 89 | 88 | 83 | 82 | 89 | 93 | 97 | 86 | 77 | 95 | 91 | 89 | 72 | 81 | 86 | 89 | 83 | 93 | 77 | 72 | 72 | 48 | 59 | 87 | 102 | 102 | 96 | 101 | |
| Stará Lesná, AÜ SAV, EMEP | 102 | 91 | 109 | 100 | 101 | 100 | 98 | 108 | 108 | 92 | 85 | 109 | 111 | 106 | 85 | 104 | 92 | 99 | 103 | 97 | 81 | 90 | 99 | 69 | 103 | 107 | 119 | 118 | 123 | 123 | |



Hodnoty sú uvedené v µg/m³ Prázdny štvorec znamená menej ako 75 % platných meraní za daný deň

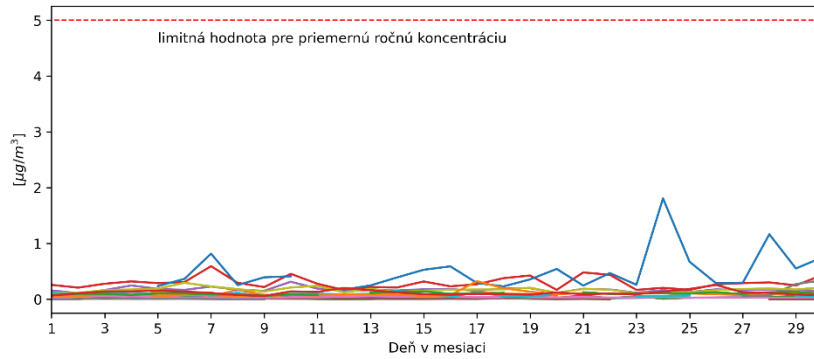
Poznámka

Cieľová hodnota pre O₃: Najväčšia denná 8-hodinová priemerná koncentrácia neprekročí 120 µg/m³ viac ako 25 dní za kalendárny rok v priemere troch rokov.

Vysvetlivky skratiek aglomerácií a zón

- BA aglomerácia Bratislava,
- KE aglomerácia Košice (územie mesta Košíc a obcí Bočiar, Haniska, Sokoľany a Veľká Ida),
- BSK zóna Bratislavský kraj (územie Bratislavského kraja okrem Bratislavy),
- TT zóna Trnavský kraj,
- BB zóna Banskobystrický kraj,
- NR zóna Nitriansky kraj,
- TN zóna Trenčiansky kraj,
- PO zóna Prešovský kraj,
- KSK zóna Košický kraj (územie Košického kraja okrem územia mesta Košíc a obcí Bočiar, Haniska, Sokoľany a Veľká Ida),
- ZA zóna Žilinský kraj.

**Priemerná denná koncentrácia benzénu
6/2024**



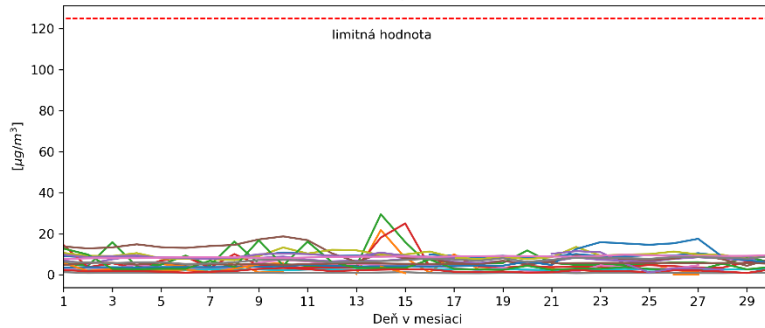
- Banská Bystrica, Štefánik. náb.
- Bratislava, Púchovská
- Bratislava, Trnavské Mýto
- Košice, Štefánikova
- Krompachy, SNP
- Lučenec, Gemerská cesta
- Martin, Jesenského
- Nitra, Štúrova
- Prešov, arm. gen. L. Svobodu
- Rohožník, Senická cesta
- Rovinka
- Ružomberok, Riadok
- Trenčín, Hasičská
- Trnava, Kollárova

Poznámka

Limitná hodnota pre priemernú ročnú koncentráciu benzénu je $5 \mu\text{g}/\text{m}^3$.

Benzén nemá stanovenú limitnú hodnotu pre priemernú dennú koncentráciu.

**Priemerná denná koncentrácia SO₂
6/2024**



- Banská Bystrica, Štefánik. náb.
- Bratislava, Jeséniova
- Bratislava, Mamateyova
- Bratislava, Púchovská
- Handlová, Morovianska cesta
- Košice, Štefánikova
- Krompachy, SNP
- Liptovský Mikuláš, Školská
- Nitra, Štúrova
- Ošcadnica
- Púchov, 1. mája
- Rohožník, Senická cesta
- Rovinka
- Ružomberok, Riadok
- Senica, Hviezdoslavova
- Topoľníky, Aszód, EMEP
- Trenčín, Hasičská
- Vranov nad Top., M.R.Štefánika

Poznámka

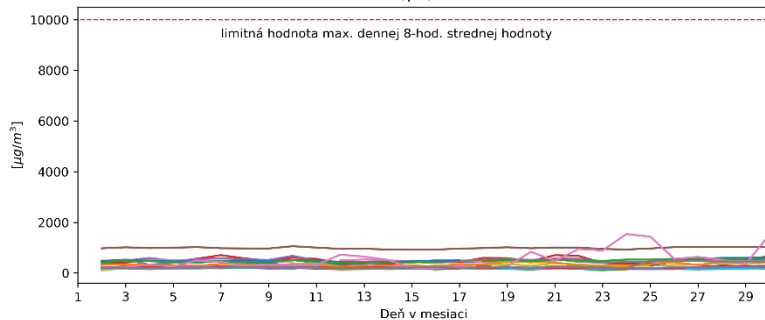
Limitná hodnota pre SO₂:

Priemerná hodinová koncentrácia nesmie prekročiť hodnotu $350 \mu\text{g}/\text{m}^3$ viac ako 24 krát za rok.

Priemerná 24-hodinová koncentrácie nesmie prekročiť hodnotu $125 \mu\text{g}/\text{m}^3$ viac ako 3 krát za rok.

SO₂ dlhodobo neprekračuje limitné hodnoty.

**Max.denná 8-hodinová stredná hodnota koncentrácie CO
6/2024**



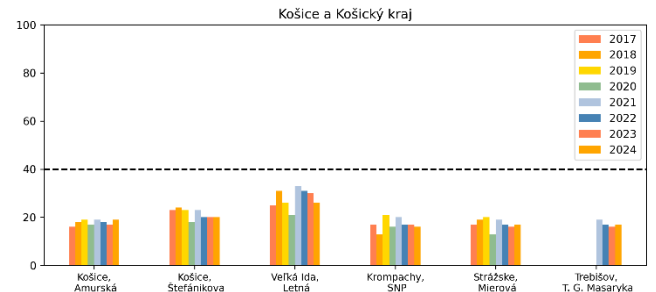
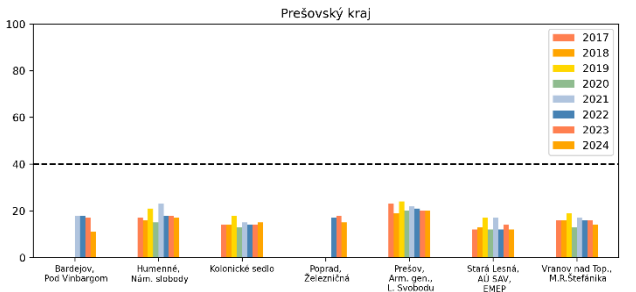
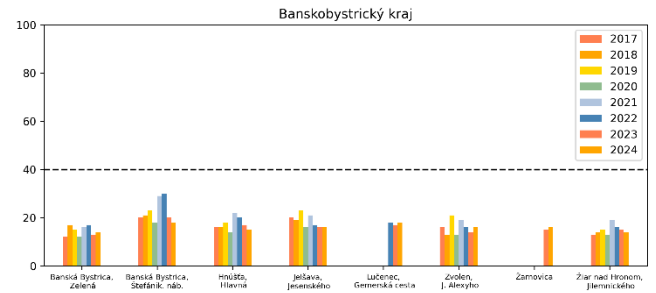
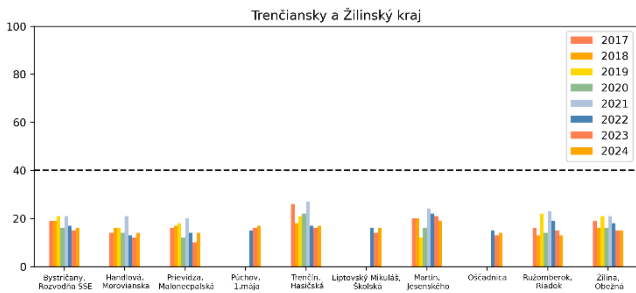
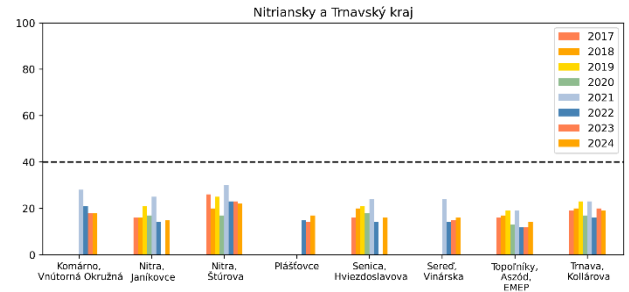
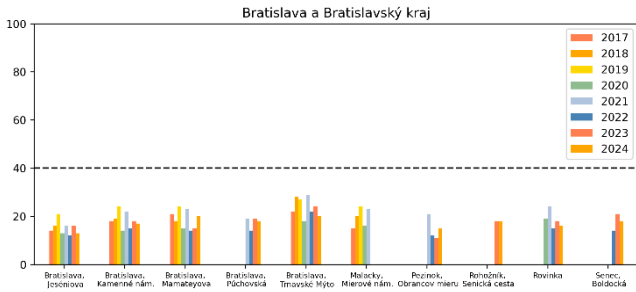
- Banská Bystrica, Štefánik. náb.
- Bratislava, Púchovská
- Bratislava, Trnavské Mýto
- Košice, Štefánikova
- Krompachy, SNP
- Lučenec, Gemerská cesta
- Martin, Jesenského
- Nitra, Štúrova
- Prešov, arm. gen. L. Svobodu
- Púchov, 1. mája
- Rohožník, Senická cesta
- Rovinka
- Ružomberok, Riadok
- Senec, Boldocká
- Trenčín, Hasičská
- Trnava, Kollárova
- Veľká Ida, Letná
- Žilina, Obežná

Poznámka

Limitná hodnota pre CO: Maximálna priemerná 8-hodinová koncentrácia je $10000 \mu\text{g}/\text{m}^3$.

CO dlhodobo neprekračuje limitné hodnoty.

Porovnanie priemerných mesačných koncentrácií PM₁₀ (µg/m³) v mesiaci jún v rokoch 2017 - 2024



Smogový varovný systém

Smogový varovný systém v SR je nastavený pre tieto znečisťujúce látky: SO₂, NO₂, PM₁₀ a prízemný ozón (O₃)

Pravidlá na pre vydanie oznámenia o vzniku smogovej situácie a výstrahy pred závažnou smogovou situáciou sú dané legislatívou, ich zhrnutie a aktuálne hodnoty sú na [web stránke SHMU](#)

SO₂ NO₂

Výstražný prah pre SO₂ ani pre NO₂ nebol v priebehu mesiaca prekročený.

O₃

Informačný ani výstražný prah pre O₃ nebol prekročený

PM₁₀

Informačný ani výstražný prah pre PM₁₀ nebol prekročený

Poznámka

V tomto dokumente sú spracované údaje, ktoré prešli predbežnou validáciou.